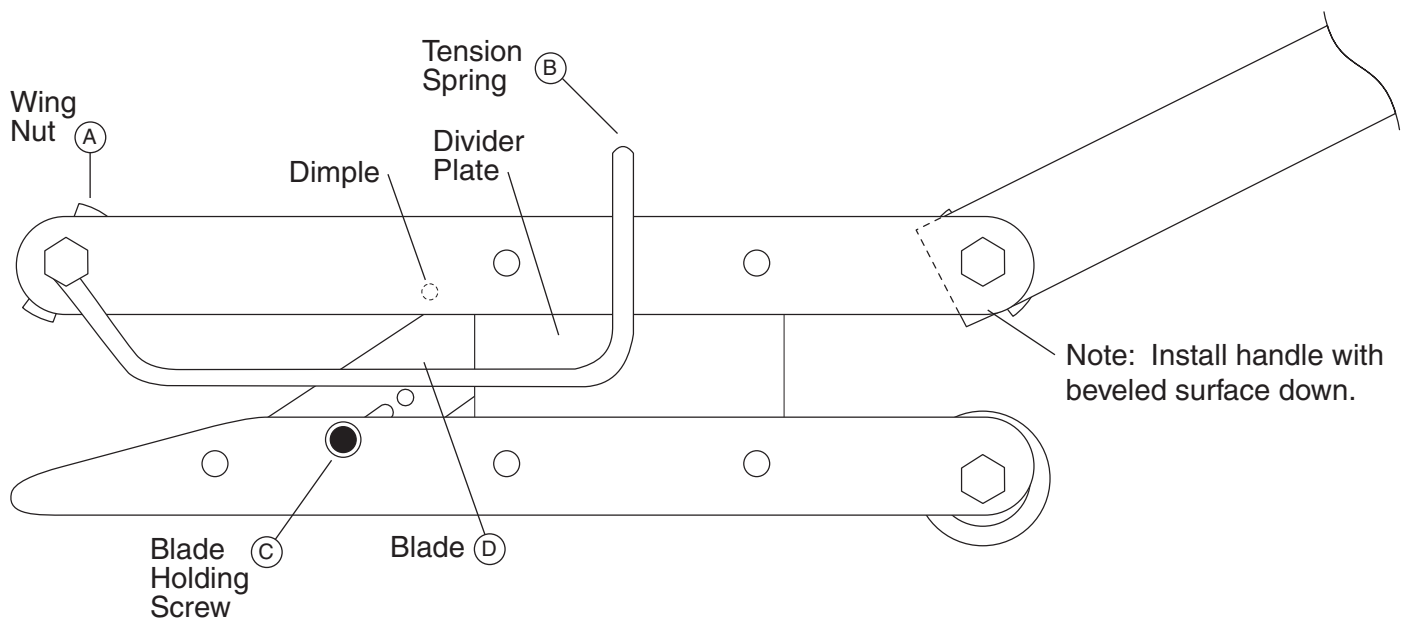


Instructions and Parts List for **GUNDLACH** No. 951 Stand-Up Cutter

A very simple tool to use—for cutting room work or on the job. No high expense and the maintenance connected with electric cutters. Cuts by the standing-walking method. Uses easily replaceable blades. Easy to follow chalk lines, and makes 90° turns. This cutter glides along on a ball bearing 'heel' and the open throat design accepts even the heaviest pile. Handlebar is 17" wide for easy steering, 35" high, and is plated.



To Change Blades ...

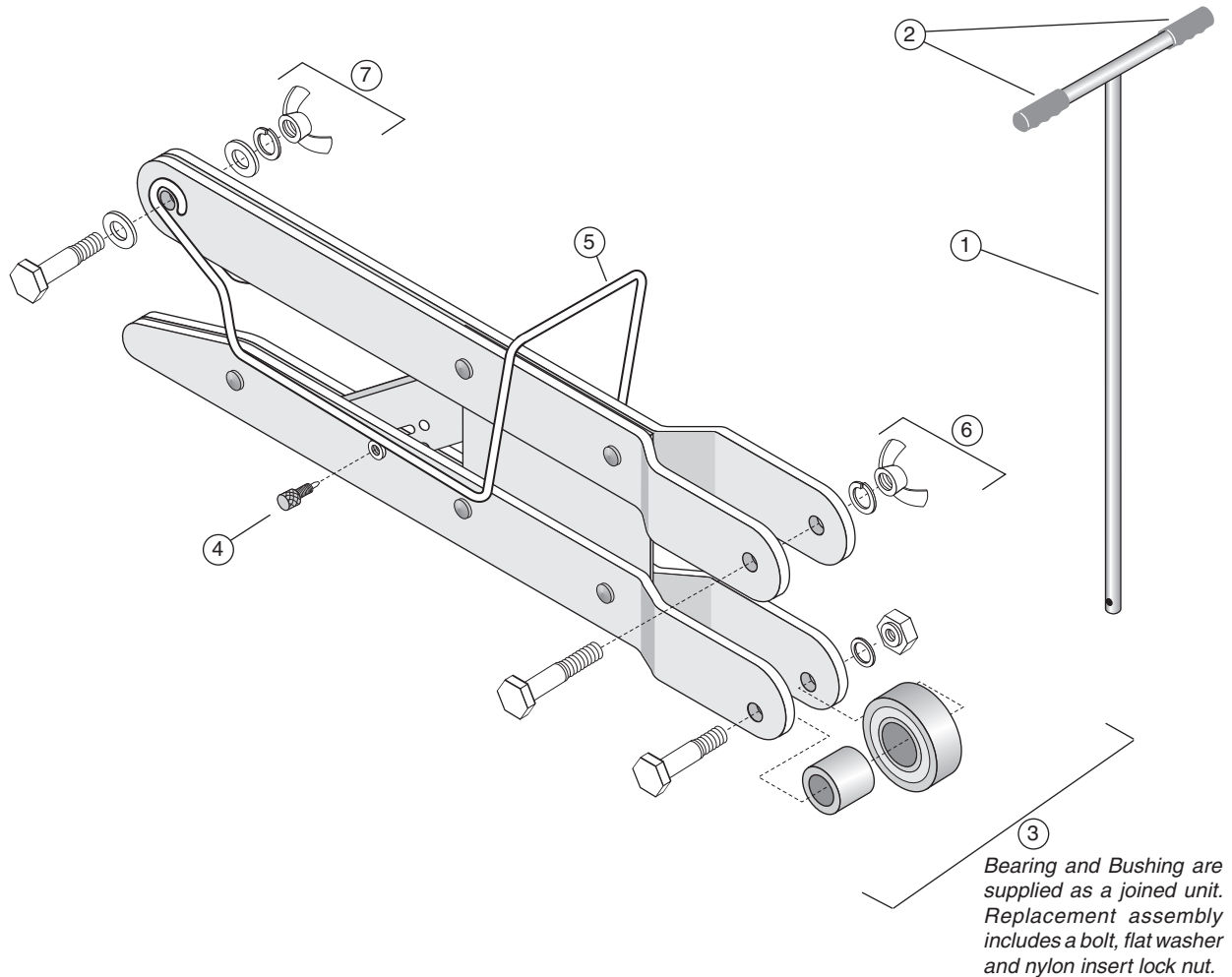
1. Loosen Wing Nut (A) and raise Tension Spring (B).
2. Loosen Blade Holding Screw (C) and remove worn blade (D). **Note:** Safely discard worn blade.
3. Insert new blade in front of Divider Plate with tip against dimple and tighten Blade Holding Screw (C).
4. Reposition Tension Spring (B) and tighten Wing Nut (A) securely.

Note: Ordinary utility blades will not fit this cutter. Use only our replacement blade, No. 953-5. For best results, keep a sharp blade in cutter.

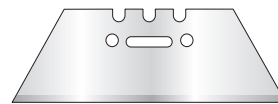
To Make Cut ...

1. Step on carpet with left foot near chalk line.
2. Place cutter in position with handle upright.
3. Give back of cutter a tap with the right foot to start cut.
4. Lower handle and push to finish cut. *Do not push cutter completely out of cut.*
5. When the blade has finished the cut, pull the cutter backward in the cut a foot or more and lift cutter out. This cleans out any fibers caught in the cutter.

No. 951 Stand-Up Cutter



Key	Item Number	Qty Req.	Description
1	951-B	1	Handle (no grips)
2	LR-GRIP	2	Hand Grip (sold 1 each)
3	951-C	1	Rear Bearing Assembly
4	951-D	1	Blade Holding Screw
5	951-K	1	Tension Spring
6	951-L	1	Bolt, Split Washer and Wing Nut
7	951-M	1	Bolt, Flat Washers (2 each), Split Washer and Wing Nut
—	951-A	1	Stand-Up Cutter Assembly (includes all parts above except No. 951-B Handle)



See current product catalog for No. 953-5 Replacement Blades (5/package).



Beno J. Gundlach Company

211 North 21st Street • P.O. Box 544
Belleville, IL 62222 • U.S.A.
TEL: 618 233-1781 • FAX: 618 233-3636
www.benojgundlachco.com